



# GMT MONTHLY MEMBERSHIP PROGRESS REPORT

Results as of: 3/31/2017

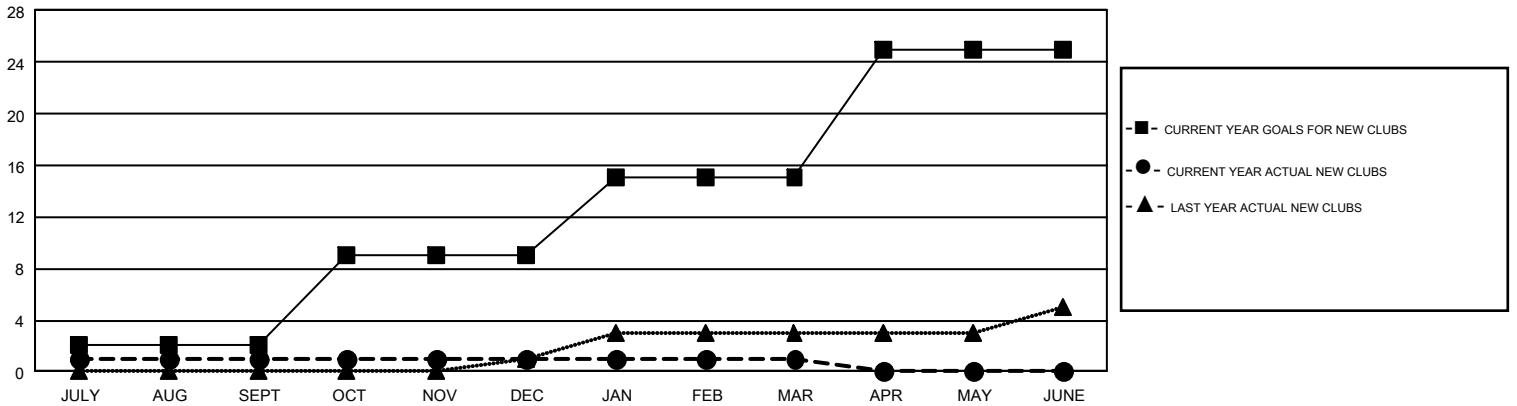
## GMT Constitutional Area 1, Group G

GMT: KENNETH SCHWOLS

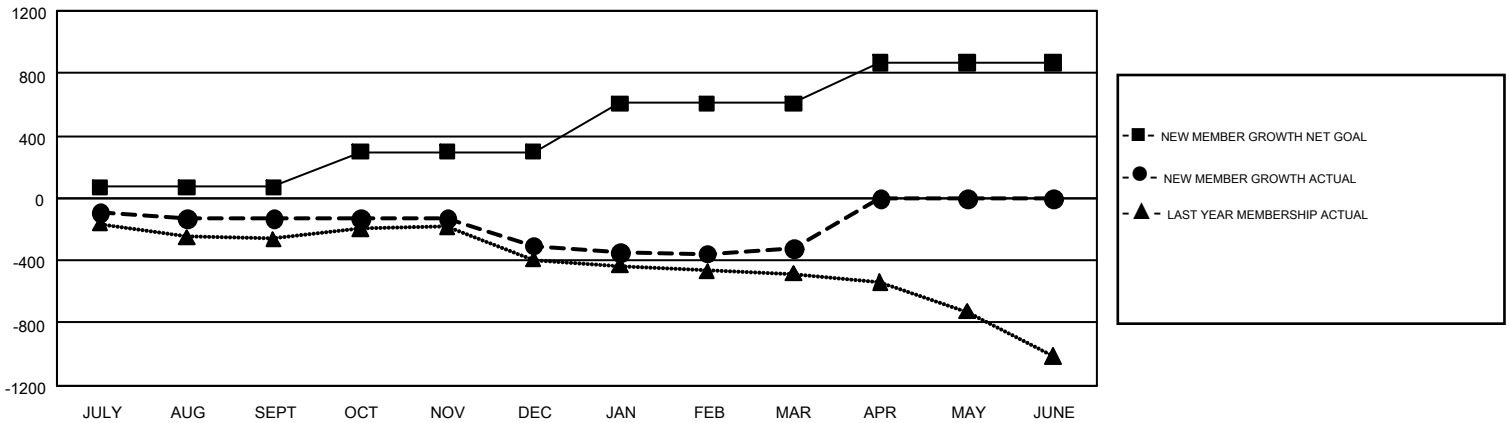
REPORT DOES NOT INCLUDE CLUBS IN UNDISTRICTED AREAS.

Clubs				Members			
RESULTS FOR 2016-2017				RESULTS FOR 2016-2017			
QUARTER	NEW CLUB GOAL	NEW CLUBS	DROPPED CLUBS	QUARTER	NEW MEMBER GROWTH NET GOAL (not reinstated or transfers)	NEW MEMBER GROWTH ACTUAL (not reinstated or transfers)	DROPPED MEMBERS ACTUAL (including transfers)
JULY/AUG/SEPT	2	1	2	JULY/AUG/SEPT	70	449	579
OCT/NOV/DEC	7	0	4	OCT/NOV/DEC	228	416	590
JAN/FEB/MAR	6	0	0	JAN/FEB/MAR	308	449	464
APR/MAY/JUNE	10	0	0	APR/MAY/JUNE	262	0	0

GOALS AND ACTUAL NEW CLUBS CUMULATIVE



GOALS AND ACTUAL MEMBERS CUMULATIVE



DROPPED CLUBS: 6	423 CLUBS OF 798 ADDED 1 OR MORE NEW MEMBERS	<b>GENDER DISTRIBUTION</b> MALE 12,778 (69.50%) FEMALE 5,608 (30.50%)
<b>DROPPED MEMBERS</b> DECEASED 216 CLUB CANCELLED 38 OTHER 1,379 <b>TOTAL 1,633</b>	<a href="#">CLICK HERE FOR CUMULATIVE MEMBERSHIP DATA</a>	TOTAL FAMILY UNIT MEMBERS 4,027 FAMILY MEMBERS PAYING HALF DUES 2,060